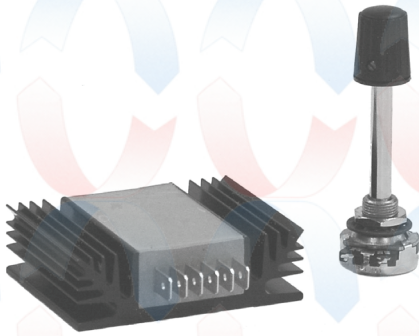




Speed control MSC



Part no.	Description
MSC 19.0013	Speed control incl potmeter & knob 10-30V 15A range: 10-100% switch: on-off
MSC 19.0014	Speed control 10-30V 15A input: 0-10V
MSC 19.0015	Speed control incl potmeter & knob 10-30V 25A range: 10-100% switch: on-off
MSC 19.0019	Speed control 15A 24V incl extension JPT 6 pin plug



Part no.	Description	Voltage	Range	Switch	Max. continuous
MSC 19.0003	Pot-meter with nut and sticker	12 V DC & 24 V DC	15% - 100%	On/Off	0.1 A



MSC 19.0010



MSC 19.0011

Part no.	Description	Voltage	Max. continuous
MSC 19.0010	Speed control	24 V DC	5.5 A
MSC 19.0011	Speed control	24 V DC	16 A